

Landmark Projects of Joaboa Group



深圳市卓宝科技股份有限公司
SHENZHEN JOABOA TECHNOLOGY CO., LTD.





TCL

TCL India industrial park

Detail:

--Location:

Tirupati Chittoor District, Andhra Pradesh, India

--Waterproofing Area: 140,000 m²

--Material selection:

TPO-P waterproofing membrane

--Construction Site: Roof



Double track railway: Map Kabao- Thanon Chira Junction

Detail:

- Location: Saraburi, Thailand
- Waterproofing Area: 500,000 m²
- Material selection:
PVC waterproofing membrane
- Construction Site: tunnel

Landmark Projects in Chinese Mainland



Hong Kong-Zhuhai-Macao Bridge
the longest cross-sea bridge in the world



HUAWEI 1st HQ--Bantian Base
built in 1998

Tencent 腾讯



TENCENT Beijing & Shenzhen HQ



SM Yangzhou City Plaza

CONTENTS

- 01** INTERNATIONAL PROJECTS
- 02** GOVERNMENT PROJECTS
- 03** AIRPORT PROJECTS
- 04** SUBWAY & TUNNEL PROJECTS
- 05** CIVIL ENGINEERING
- 06** SINGLE-PLY ROOF PROJECTS



Jomtien No. 1 Condo, Pattaya, Thailand



Hishine Regal Sukhumwit 76, Bangkok, Thailand



Hishine Regal Bangna, Bangkok, Thailand



Palm Spring, Pattaya Thailand



Urban Villaga, Thailand



Prince IT Building, Cambodia



Prince International Plaza, Phnom Penh, Cambodia



R & F City, Phnom Penh, Cambodia



Diamond Island, Cambodia



Lingnan Garden, Cambodia



La Vista One, Cambodia



Crescent Mall, Vietnam



Tanzania National Stadium

Detail:

- Location: Dar Es Salaam, Tanzania
- Waterproofing Area: 38,000 m²
- Material selection:
 - Roofing Siphon Drainage System
 - 911 Two-component PU Waterproof Coating
- Construction Site: Roof



Kigali Convention Centre

Detail:

- Location: Kigali, Rwanda
- Waterproofing Area: 85,000 m²
- Material selection:
 - JS Polymer Cementitious Coating
 - TWY-280 Ceramic Tile Adhesives
- Construction Site: Roof, basement



THE VISTA

Detail:

--Location: HCM City, Viet Nam

--Waterproofing Area: 50,000 m²

--Material selection:

PET Self-adhesive Membrane

BAC Self-adhesive Membrane

JS Polymer Cementitious Coating

911 Two-component PU Coating

--Construction Site: Roof, bathroom, kitchen



Golden Westlake Apartment, Vietnam



2008 Beijing Olympic Stadium – Bird' s Nest

Detail:

--Location: Beijing, China

--Material Selection:

BAC® Self-adhesive Membrane

CLF Self-adhesive Membrane

SPU One-component PU Waterproof Coating

--Construction Site: Expansion joint, basement



Nanjing Olympic Sports Center

Detail:

--Location: Nanjing, China

--Waterproofing Area: 50,000 m²

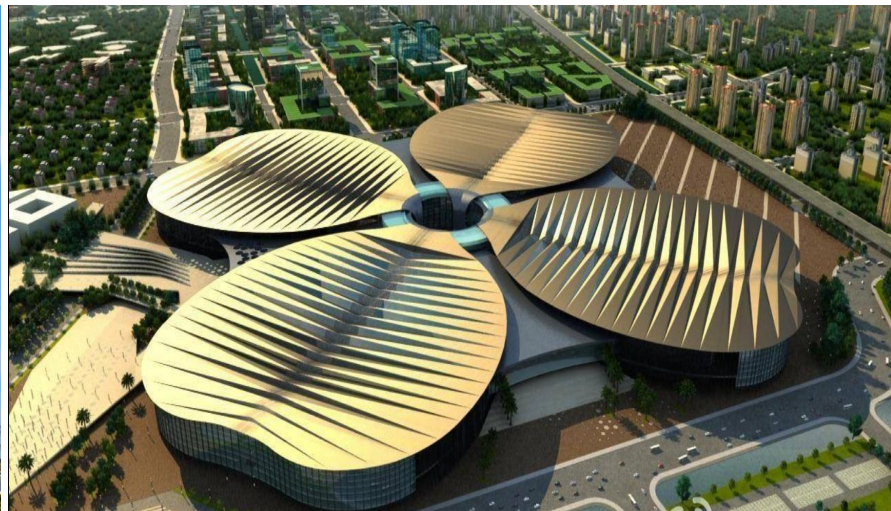
--Material selection:

TWY-200 Acrylic Waterproof Coating

BAC® Self-adhesive Waterproof Membrane

911 Two-component PU Waterproof Coating

--Construction Site: Steel roof, Basement



Canton Fair Stadium—Guangzhou International Convention and Exhibition Center

Detail:

--Location: Guangzhou, China

--Waterproofing Area: 150,000 m²

--Material selection:

JS Polymer Coating

BAC[®] Self-adhesive Membrane,

SPU One-component PU Coating

--Construction Site: Basements and roofs

China Expo Exhibition Complex (Shanghai)

Detail:

--Location: Shanghai, China

--Waterproofing Area: Over 400,000 m²

--Material selection:

MAC macromolecule Membrane

CLF Self-adhesive Membrane

SPU One-component PU Coating

--Construction Site: Side walls and basements



Suzhou International Expo Center

Detail:

- Location: Suzhou, China
- Waterproofing Area: 55,000 m²
- Material selection:
 - CLF Self-adhesive Membrane
 - PET Self-adhesive Membrane
 - PMC-101 Crystallized Coating



National Museum of China

Detail:

- Location: Beijing, China
- Waterproofing Area: Over 20,000 m²
- Material selection:
 - BAC® Self-adhesive Membrane
 - 911 Two-component PU Coating
- Construction Site: Roof and basement



Office Building of China Ministry of Public Security

Detail:

- Location: Beijing, China
- Waterproofing Area: 40,000 m²
- Material selection:
 - BAC Self-adhesive Membrane
 - CLF Self-adhesive Membrane
 - SPU One-component PU Coating
- Construction Site: Basement and roof



New Museum of Guangdong Province

Detail:

- Location: Guangzhou, China
- Waterproofing Area: 50,000m²
- Material selection:
 - BAC Self-adhesive Membrane
 - MAC Self-adhesive Membrane
- Construction Site: Basement



Ningxia International Conference Center

Detail:

- Location: Guangzhou, China
- Waterproofing Area: 50,000m²
- Material selection:
 - BAC Self-adhesive Membrane
 - MAC Self-adhesive Membrane
- Construction Site: Basement



Hainan Provincial Government Office Building

Detail:

- Location: Hainan, China
- Waterproofing Area: 29,000m²
- Material selection:
 - MAC Self-adhesive Membrane
 - SPU One-component PU Coating
- Construction Site: Roof, basement, balcony



Power Plant in Togtoh Inner Mongolia

Detail:

- Location: Inner Mongolia, China
- Waterproofing Area: 38,000m²
- Material selection:
 - SBS Torch-applied Membrane
- Construction Site: Roof



Nanchang West Railway Station

Detail:

- Location: Nanchang, Jiangxi Province, China
- Waterproofing Area: 1,000,000m²
- Material selection:
 - MAC Macromolecule Membrane
 - 911 Two-component PU Coating
 - PMC-101 Crystallized Coating
- Construction Site: Roof and basement



China Agricultural University Gymnasium

Detail:

- Location: Beijing, China
- Waterproofing Area: 20,000m²
- Material selection:
 - SPU One-component PU Coating
- Construction Site: Bathroom, kitchen, etc.



Chengdu Territory World Financial Center

Detail:

- Location: Chengdu, Sichuan Province, China
- Waterproofing Area: 120,000m²
- Material selection:
 - BAC[®] Self-adhesive Membrane,
 - PET Self-adhesive Membrane
 - SPU One-component PU Coating
- Construction Site: Roof and basement



Shenzhen Civic Center Plaza

Detail:

--Location: Shenzhen, China

--Waterproofing Area: 120,000m²

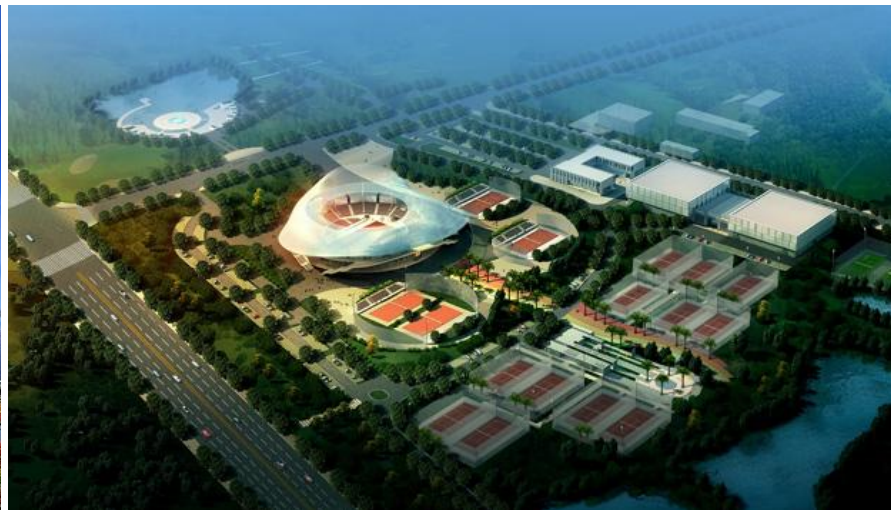
--Material selection:

BAC Self-adhesive Membrane

S-CLF Self-adhesive Membrane

911 Two-component PU Coating

--Construction Site: Roof, basement



Basketball Stadium in Dongguan

Detail:

--Location: Dongguan, Guangdong, China

--Waterproofing Area: 250,000m²

--Material selection:

PET Self-adhesive Membrane

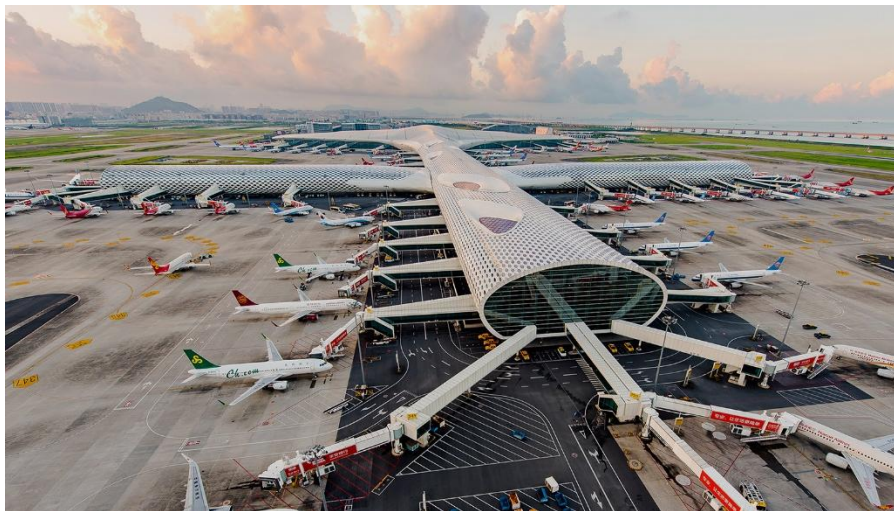
BAC Self-adhesive Membrane

SPU One-component PU Coating

JS Polymer Cementitious Coating

--Construction Site:

Side walls and baseboards of basements



Shenzhen Bao'an International Airport

Detail:

- Location: Shenzhen, China
- Waterproofing Area: 400,000m²
- Material selection:
 - BAC Self-adhesive Membrane
 - S-CLF Sel-adhesive Membrane
- Construction Site: Basement



Nanchang Changbei International Airport

Detail:

- Location: Nanchang, China
- Waterproofing Area: 70,000m²
- Material selection:
 - WP-SBS Wet-application Membrane
 - 911 Two-component PU Coating
- Construction Site: Basement and roof



Tianjin Binhai International Airport

Detail:

- Location: Tianjin, China
- Waterproofing Area: Over 100,000m²
- Material selection:
 - BAC Self-adhesive Membrane
 - MAC Non-asphalt HDPE Membrane
 - 911 Two-component PU Coating
- Construction Site: Basement and roof



Shijiazhuang Zhengding International Airport

Detail:

- Location: Shijiazhuang, China
- Waterproofing Area: 10,000m²
- Material selection:
 - CLF Self-adhesive Membrane
- Construction Site: Basement



Zhengzhou Xinzheng International Airport

Detail:

- Location: Zhengzhou, China
- Waterproofing Area: 25,000m²
- Material selection:
 - BAC Self-adhesive Membrane
 - PET Self-adhesive Membrane
- Construction Site: Basement



Quanzhou Jinjiang International Airport Terminal

Detail:

- Location: Shijiazhuang, China
- Waterproofing Area: 10,000m²
- Material selection:
 - CLF Self-adhesive Membrane
- Construction Site: Basement



Guangzhou Shenzhen Intercity Railway

Detail:

- Location: Guangzhou, Dongguan and Shenzhen, China
- Waterproofing Area: Over 1,000,000 m²
- Material selection:
 - BAC Self-adhesive Membrane
 - MAC Non-asphalt HDPE Membrane



Metro Line 1 & 2 of Chengdu City

Detail:

- Location: Chengdu, China
- Waterproofing Area: Over 380,000 m²
- Material selection:
 - BAC Self-adhesive Membrane
 - MAC Non- asphalt HDPE Film Membrane



Phase II Project of Metro Line 4 of Wuhan

Detail:

--Location: Wuhan, China

--Waterproofing Area: Over 300,000m²

--Material selection:

BAC Self-adhesive Membrane

MAC Macromolecule Self-adhesive Membrane



Chongqing Cimushan Tunnel

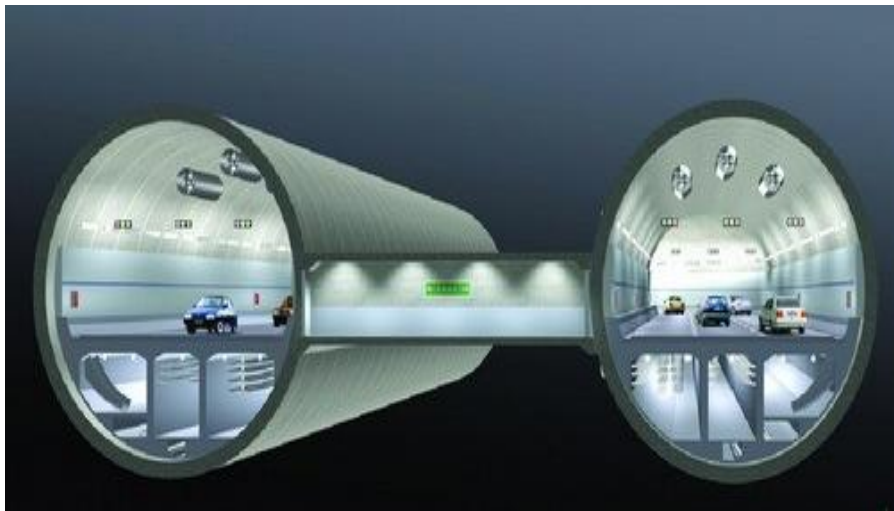
Detail:

--Location: Chongqing, China

--Waterproofing Area: Over 7,500m²

--Material selection:

BAC Self-adhesive Membrane



The Upstream River Channel Project in Nanjing Section of Yangtze River

Detail:

- Location: Nanjing, China
- Waterproofing Area: Over 50,000 m²
- Material selection:
 - MAC Non-asphalt HDPE Membrane



Dongguan Lion Tunnel

Detail:

- Location: Dongguan, China
- Waterproofing Area: 100,000 m²
- Material selection:
 - BAC Self-adhesive Membrane
- Construction Site: Sidewall, bottom plate, top plate



Vehicle Depot Engineering of Shanghai Metro Line 9

Detail:

- Location: Shanghai, China
- Waterproofing Area: 90,000 m²
- Material selection:
 - BAC Self-adhesive Membrane
 - S-CLF Self-adhesive Membrane



North and South Line of Nanjing Metro

Detail:

- Location: Nanjing, China
- Waterproofing Area: 20,000 m²
- Material selection:
 - 911 Two-component PU Coating



Tianjin Metro Line 2 & 3

Detail:

- Location: Tianjin, China
- Waterproofing Area: Over 200,000 m²
- Material selection:
 - BAC Self-adhesive Membrane
 - S-CLF Self-adhesive Membrane
 - PMC-101 Crystallized Coating



Nanjing Yangtze Tunnel

Detail:

- Location: Nanjing, China
- Waterproofing Area: 180,000 m²
- Material selection:
 - MAC Macromolecule Membrane
 - PMC-101 Crystallized Coating



Ningbo Metro Line 1

Detail:

- Location: Ningbo, China
- Waterproofing Area: 300,000 m²
- Material selection:
 - BAC Self-adhesive Membrane
 - S-CLF Self-adhesive Membrane
 - 911 Two-component PU Coating



Nanjing Metro Line 3

Detail:

- Location: Nanjing, Jiangsu, China
- Waterproofing Area: Over 300,000 m²
- Material selection:
 - BAC Self-adhesive Membrane
 - S-CLF Self-adhesive Membrane
 - 911 Two-component PU Coating



Huawei Base in Shenzhen

Detail:

- Location: Shenzhen, China
- Waterproofing Area: Over 129,000 m²
- Material selection:
 - PET Self-adhesive Membrane
 - BAC Self-adhesive Membrane
 - 911 Two-component PU Coating
- Construction Site: Basement and roof



Tencent Headquarters Building in Beijing

Detail:

- Location: Beijing, China
- Waterproofing Area: 300,000 m²
- Material selection:
 - Rubber Bitumen Coating,
 - WICI Waterproofing and Insulation Compound Integration System
- Construction Site: Basement sidewall and baseboard



Tencent Coastal Building

Detail:

--Location: Shenzhen, China

--Waterproofing Area: 280,000 m²

--Material selection:

BAC Self-adhesive Membrane

SPU One-component PU Coating

JS Polymer Cementitious Coating

--Construction Site: Basement and wall



Lang Lang Music World

Detail:

--Location: Shenzhen, China

--Waterproofing Area: 35,000 m²

--Material selection:

BAC-P Self-adhesive Membrane

SPU One-component PU Coating

--Construction Site: Roof



Modern Moma Beijing

Detail:

--Location: Beijing, China

--Waterproofing Area: 110,000 m²

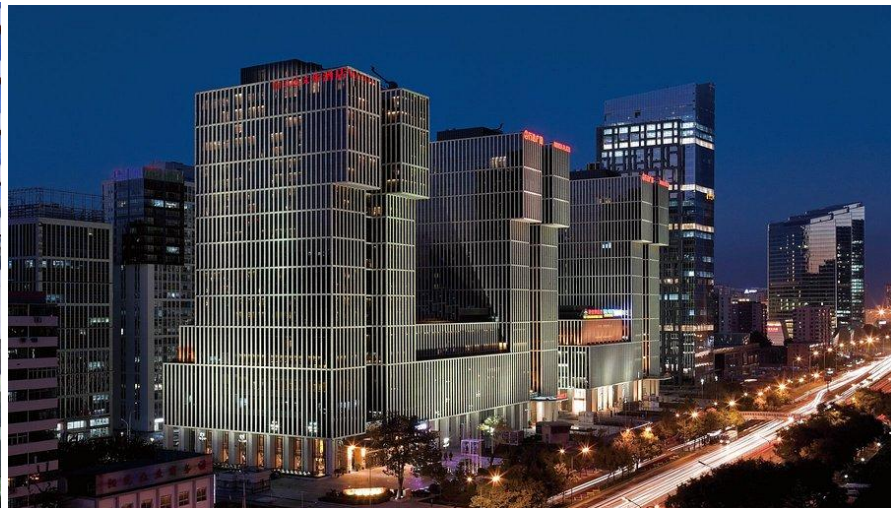
--Material selection:

BAC Self-adhesive Membrane

CLF Self-adhesive Membrane

911 Two-component PU Coating

--Construction Site: Basement and roof



Beijing Wanda Plaza

Detail:

--Location: Beijing, China

--Waterproofing Area: 250,000 m²

--Material selection:

BAC Self-adhesive Membrane

SPU One-component PU Coating

--Construction Site: Basement, roof and bathroom



Shenzhen ST Moritz Garden

Detail:

--Location: Shenzhen, China

--Waterproofing Area: 200,000 m²

--Material Selection:

BAC Self-adhesive Membrane

911 Two-component PU Coating

--Construction Site: Basement and roof



Napa Valley Villa

Detail:

--Location: Beijing, China

--Waterproofing Area: 300,000 m²

--Material Selection:

CLF Self-adhesive Membrane

SPU One-component PU Coating

--Construction Site: Roof, bathroom and balcony



Faurecia's Auto Interior Decoration Factory Roofing Project

Detail:

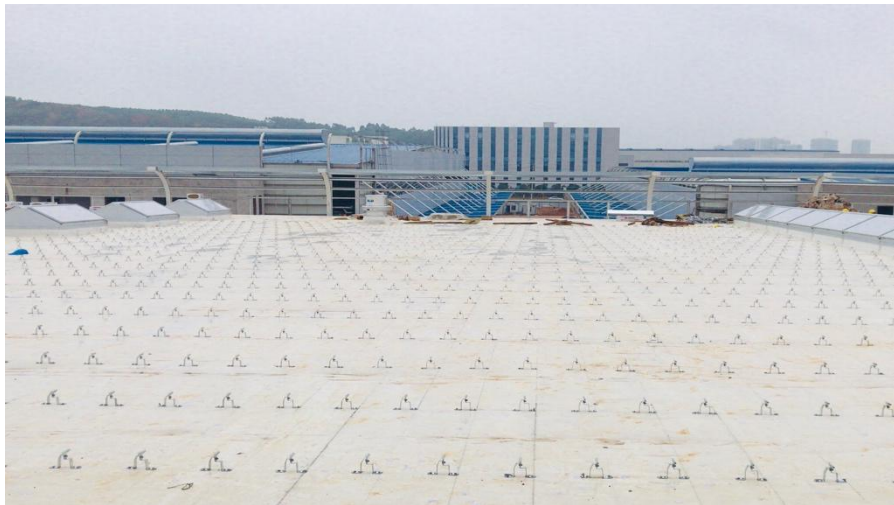
- Location: Wuhan, China
- Waterproofing Area: 25,000 m²
- Material Selection:
 - FM Approved PVC Roofing Sheets
- Construction Site: Roof



Coating workshop of rulli automobile co., ltd. In Baic group

Detail:

- Location: Haikou, China
- Waterproofing Area: 15,000 m²
- Material selection:
 - FM Approved TPO Roofing Sheets
- Construction Site: Roof



Liudong passenger car parts production base

Detail:

--Location: Liuzhou, Guangxi

--Waterproofing Area: 30,800 m²

--Material Selection:

1.5mm TPO waterproofing membrane

--Construction Site: Roof



Coating workshop of Ruli automobile co., ltd. In Baic group

Detail:

--Location: Ruli, Yunnan

--Waterproofing Area: 200,000 m²

--Material Selection:

Wici Panel (1.2mmTPO+50mm PU waterproofing panel)

--Construction Site: Roof



PVC Roofing Project of Aviation Industry of China Chengdu Aircraft Industrial (group)

Detail:

- Location: Chengdu, China
- Waterproofing Area: 9,000 m²
- Material selection:
FM Approved PVC Roofing Sheets
- Construction Site: Roof



Cloud base cloud computing service project in west of science and technology industrial park

Detail:

- Location: Ruili, Yunnan
- Waterproofing Area: 5,000 m²
- Material Selection:
1.5mm THK TPO waterproofing membrane
- Construction Site: Roof



THANK YOU

Joaboa Tech, Pioneer of High
Quality Waterproof System!

1000+ Agents & Distributors
Spread around Chinese Mainland,
Now We Are Strongly Developing
Overseas Agents

Telephone: +86 0755 33052250
Email: international@zhuobao.com

We Look Foward to Hearing from You.



Wechat ID



LinkedIn ID